

SECAB Viewertm

Small Exchange Carrier Access Billing
File Format and
Reporting Utility

User's Guide

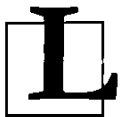
Version 1.2.12

SECAB Viewer tm

**Small Exchange Carrier Access Billing
File Format and Reporting Utility
User's Guide**

Version 1.2.12

Supports SECABG Issue 12



Lymeware Corporation
P

2010-1212-SECVUG-0012

SECAB Viewer

®

P

®

P

SECAB Viewer

©

©

Contents

Welcome.....	8
About this Guide.....	8
Who Should Read this Guide?.....	8
Introducing SECAB Viewer.....	9
Getting Started with SECAB Viewer	11
Before You Start.....	11
Installing SECAB Viewer	13
Requesting a license key.....	17
About the SECAB Viewer Product.....	19
Using SECAB Viewer	23
SECAB Viewer From A Command Line.....	23
Output Formats.....	29
The Text Output Format.....	30
The CSV (Comma-Delimited) Output Format.....	35
The XML Output Format.....	39
The HTML Output Format.....	43
SECAB Viewer Utilities	46
Utilities Overview.....	46
Batch Processor.....	46
Process an Entire Directory of Files.....	47
A Custom Report.....	48
How to Get Help.....	49
Scope of Support Services.....	49
Try this first.....	49
Contact Lymeware Product Support.....	50
Appendix A - CONFIGURATION WORKSHEETS AND FORMS.....	51
License Request Form.....	52
SECAB Viewer License Request Form.....	52
SECAB Viewer Problem Report Form.....	53
Appendix B – SECAB VIEWER REFERENCE DOCUMENTATION	54
Appendix C – SAMPLE SECABG DATA	56

Appendix D – INSTALLING PERL61
Linux Perl Installation.....61
Solaris Perl Installation.....62
Windows Perl Installation.....63
Appendix E - GLOSSARY64

Figures

Figure 1: The Initial Windows Install window.....	15
Figure 2. The License Agreement Install window.....	15
Figure 3. The Install Location window.....	16
Figure 4. The Final Windows Install window.....	16
Figure 5. The Install Completion window.....	17
Figure 6. The SECAB Viewer Data Flow Diagram.....	19
Figure 7. The Generic SECAB Viewer Output Format.....	20
Figure 8. An HTML Output Format Example.....	21
Figure 9. An HTML Output Format Example (continued).....	22
Figure 10. The Command Shell for SECAB Viewer.....	27
Figure 11. A Simple SECAB Viewer Example.....	27
Figure 12. An Example of the Summary Output.....	28
Figure 13: Standard Text Output Format.....	30
Figure 14: A Record Detail View (Text Format).....	31
Figure 15: A Message Telephone Service Record (Text Format).....	32
Figure 16: A Message Telephone Service Record (Text Format - continued).....	33
Figure 17: The Initial CSV Output Format.....	35
Figure 18: Detail Record (CSV format after reformat).....	36
Figure 19: Resale Call Detail Usage Records (in CSV Database Format).....	37
Figure 20: A “Well-Formed” Detail Record (XML Format)	39
Figure 21: Detail Record (XML Format).....	40
Figure 22: Detail Record (XML Format - continued).....	41
Figure 23: Example of HTML Output.....	43
Figure 24: A Circuit Switch Digital Message Record (HTML Format).....	44

Tables

Table 1. Command Line Options.....	24
Table 2. Command Line Options (continued).....	25
Table 3. Standard Database Record Format.....	38
Table 4. XML Tag Name Translations	42
Table 5. HTML Standard Format Outline.....	45
Table 6. HTML Body-Only Format Outline.....	46
Table 7. SECAB Viewer Product Worksheets.....	52
Table 8. Commercial or third party documentation used by this product or manual....	55
Table 9. National, International, Internet, and Industry Standards used by this product	56

Welcome

Thank you for using SECAB Viewer, created by Lymeware Corporation. The SECAB Viewer product is designed to help you enable your organization to efficiently format, organize and display SECABG billing information which is crucial to many aspects of your business.

Most importantly, the SECAB Viewer product allows CLECs and other service providers to seamlessly blend their SECABG billing data in to whatever OSS or billing system currently in use. The instructions in this guide will introduce you to some basic carrier billing concepts and help you get familiar with the fundamentals of using your SECAB Viewer product.

About this Guide

This guide is current with the details of operation for Lymeware's SECAB Viewer, version 1.2.12. It is designed for users who are new to the SECAB Viewer product or the areas of carrier billing management and PC applications generally.

The information in this guide describes how to use a PC and a command line interface to operate SECAB Viewer in order to perform a broad range of billing data conversion and reporting tasks.

Readers are not required to have any programming or software development knowledge, but should be generally familiar with:

- The use of a personal computer,
- The use of a text editor such as Microsoft Wordpad, vi, or Vim
- Optionally the use of a spreadsheet program such as Microsoft Excel, StarOffice or OpenOffice,
- Optionally the use of an XML editor such as Altova XMLSpy, or XML Maker,
- Optionally the use of Internet browser software such as Microsoft Internet Explorer or Mozilla Firefox

Who Should Read this Guide?

This *SECAB Viewer User Guide* provides information for two groups of users – conventional users who wish to generate and view SECABG output formats; and administrators who need to install and configure the system as part of its initial implementation.

Introducing SECAB Viewer

Our SECAB Viewer product line enables organizations to efficiently format, organize, and display information on all aspects of their carrier access billing data. This same billing data, once in a usable form, can now be inserted in to databases, used in spreadsheets to generate reports, or imported into existing accounting or billing systems.

The major benefits of the SECAB Viewer products are:

Choice of Platform Support:

- Supports the platforms you use; including Microsoft Windows, Sun Solaris, and several Linux distributions (including Red Hat Enterprise Linux)
- Operation is exactly the same, regardless of platform
- Simple to use and easy to operate

Enabling Downstream Billing Automation:

- SECAB Viewer output can be easily shared and processed
- Filter and format SECAB data to your billing system's exact input requirements
- Special CSV-database format for import into most common enterprise database management systems, including Oracle, DB2, Informix, MySQL, Sybase, and MS SQL Server.
- Valid well-formed XML can support many standard Telecom billing systems

Useful for Revenue Assurance:

- Create user-friendly output, easily manipulated with Microsoft Excel, OpenOffice Calc or several other spreadsheet products.
- CSV or XML data can support many standard Telecom billing systems

Display Custom Billing Reports:

- SECAB Viewer output is very easy to manipulate using many script languages, including Perl, Python, and Ruby – all of which can natively read CSV and XML data for further downstream processing or reporting.
- Lymeware is also available to deliver customer-specified custom reports as an additional service.

Display Bill Presentment Data:

- SECAB Viewer output can be used directly for end-user billing presentment, especially the HTML format.
- A custom SECAB Viewer binary can be ordered with specific filters to display only the billing records and fields required to generate your end user bills, either printed or on-line.

SECAB Viewer User's Guide

SECAB Viewer is built on established server technologies and widely supported data and industry specific standards, including:

- **SECABG**, or Small Exchange Carrier Access Billing Guideline data record formats and data presentment formats, the industry standard billing record transport format.
- **CSV**, or Comma Separated Value or comma-delimited format, for use with most spreadsheet products and a common database import format,
- **XML**, or Extensible Markup Language, for input to other billing or accounting systems or for further XSLT and XML processing, and
- **HTML**, Hypertext Markup Language, for display either locally or on a web server with any standard web browser

SECAB Viewer is supported on the Linux, Solaris and Windows operating systems.

Getting Started with SECAB Viewer

Before You Start

This guide assumes that the resources you need to access the system are available and that you are familiar with how to use them. If you are not sure whether your system meets the requirements or how to use required third-party tools (primarily a web browser), talk to your manager or system administrator.

Technical Requirements

Before you begin using the system, ensure that you have the appropriate software installed and configured on your system. All you will need is –

- **One of the following platforms running one of these operating systems:**
 - o Red Hat Enterprise Linux 5 on Intel IA32/x86 platforms. Other Linux distributions may also be supported
 - o Sun Microsystems Solaris 10 on UltraSPARC platforms
 - o Microsoft Windows 2000, XP, or Vista on Intel IA32/x86 platforms
- **Optionally, a text editor running on your computer.**

SECAB Viewer text output can be viewed, modified or printed with a variety of text editors. The following editors are known to work with it:

 - o Vim version 5.7 and higher - <http://www.vim.org/>
 - o The vi text editor
 - o Microsoft Notepad and Wordpad editors
- **Optionally, a spreadsheet program running on your computer.**

SECAB Viewer CSV output has been tested with and supports a variety of spreadsheet programs. The following programs are known to work with it:

 - o OpenOffice version 1.1.4 and higher - <http://www.openoffice.org/>

SECAB Viewer User's Guide

- o StarOffice version 6.0 and higher - <http://docs.sun.com/app/docs/coll/so7en>
- o Microsoft Excel version 97 and higher – <http://www.microsoft.com>
- o ThinkFree Office 3.0 - <http://www.thinkfree.com>
- **Optionally, an XML editor running on your computer.**

SECAB Viewer XML output has been tested with and supports a variety of XML editors, including:

 - o Altova XMLSpy version 4.x and higher - <http://www.altova.com/>
 - o Symbol Click XML Marker version 1.1 and higher - <http://symbolclick.com/>
- **Optionally, a current web browser running on your computer.**

SECAB Viewer HTML output has been tested with and supports a variety of browsers. The following browsers are known to work with it:

 - o Mozilla version 1.7 and higher - www.mozilla.org/mozilla1.x
 - o Firefox version 1.0 and higher - www.mozilla.org/firefox
 - o Konqueror version 3.2 and higher - www.konqueror.org
 - o Microsoft Internet Explorer version 6 and higher - www.microsoft.com/ie

You may encounter problems if you try to access HTML reports generated by SECAB Viewer using older web browsers like Internet Explorer 4 or Netscape 4.x. If you are unsure about which web browser version you are using, click Help > About... or similar options on the menu bar in your browser. The version number will be displayed.
- **Network access to a server that is running the SECAB Viewer software.**

Your system or network administrator will be able to provide you with an Internet address (URL) from which the system hosting the SECAB Viewer product can be accessed, if necessary.

Installing SECAB Viewer

The SECAB Viewer product is available for

- Linux on ia32/Intel x86 (reference platform is Red Hat Enterprise Linux 5 x86 version),
- Sun Microsystems Solaris on UltraSPARC (reference platform is Solaris 10 SPARC version), and
- Microsoft Windows on ia32/Intel x86 (reference platform is Windows XP Service Pack 3 x86 version)

A typical SECAB Viewer product installation consists of three actions:

1. Download the correct install package from the Lymeware website or request the correct package from Lymeware Sales,
2. Perform the platform specific package installation tasks (as detailed below),
3. Request and install the license key

The pre-installation checklist consists of:

- Print out this manual
- Acquire the root or Administrator password for the target machine
- Be sure the target machine has Internet access or download the install package on another Internet-enabled machine
- Complete the License Request form (see Appendix A)

Additionally, proceed to the correct platform installation section below.



Linux Package Installation

Linux users should download the RPM version of the SECAB Viewer installation file, via FTP or HTTP. The specific URL to use will be provided by the Lymeware Sales staff.

This file can be installed with the RPM command (logged in as root):

```
rpm -i <rpmfile>
```

This will install the SECAB Viewer files to /opt/secabviewer.



Sun Solaris Package Installation

Solaris users should download the PKG version of the SECAB Viewer installation file, via FTP or HTTP. The specific URL to use will be provided by the Lymeware Sales staff.

This file can be unpacked with GZIP and TAR and installed with the ADDPKG command (logged in as root):

```
gzip -dc <tar.gz_file> | tar xvf -; pkgadd -d. <pkgname>
```

This will install the SECAB Viewer files to .



Microsoft Windows Package Installation

Windows users should download the EXE version of the SECAB Viewer installation file, via FTP or HTTP. The specific URL to use will be provided by the Lymeware Sales staff.

This file can be installed by executing it (logged in as Administrator or a user with Administrator Group privileges). You should see a screen similar to the one shown in Figure 1.

SECAB Viewer User's Guide



Figure 1: The Initial Windows Install window

Click on **Next** to continue the installation process or **Cancel** to exit the installation.

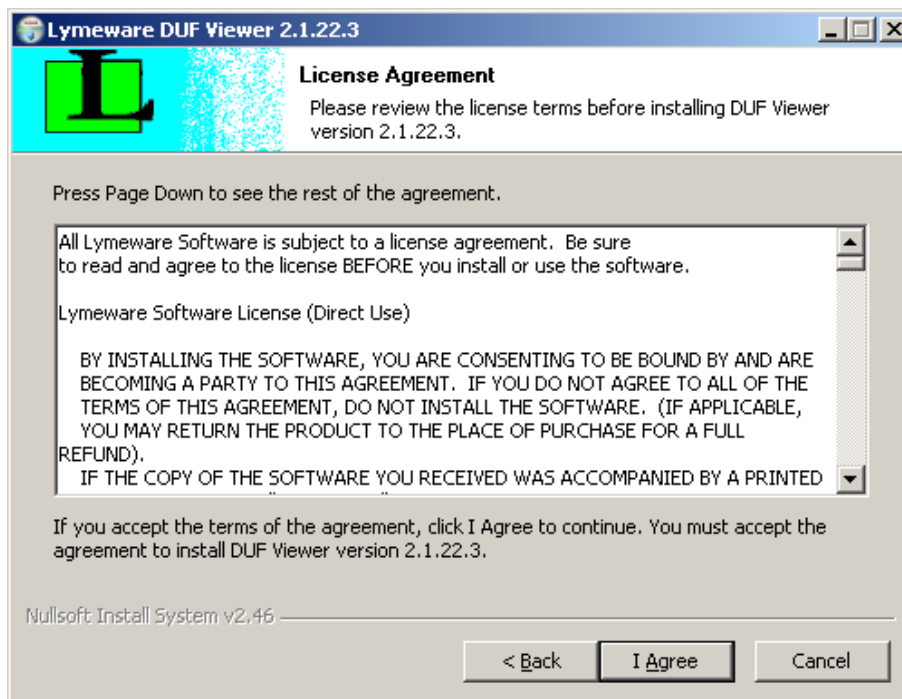


Figure 2. The License Agreement Install window

The license must be agreed to (click on the **I Agree** button) to continue installation.

SECAB Viewer User's Guide

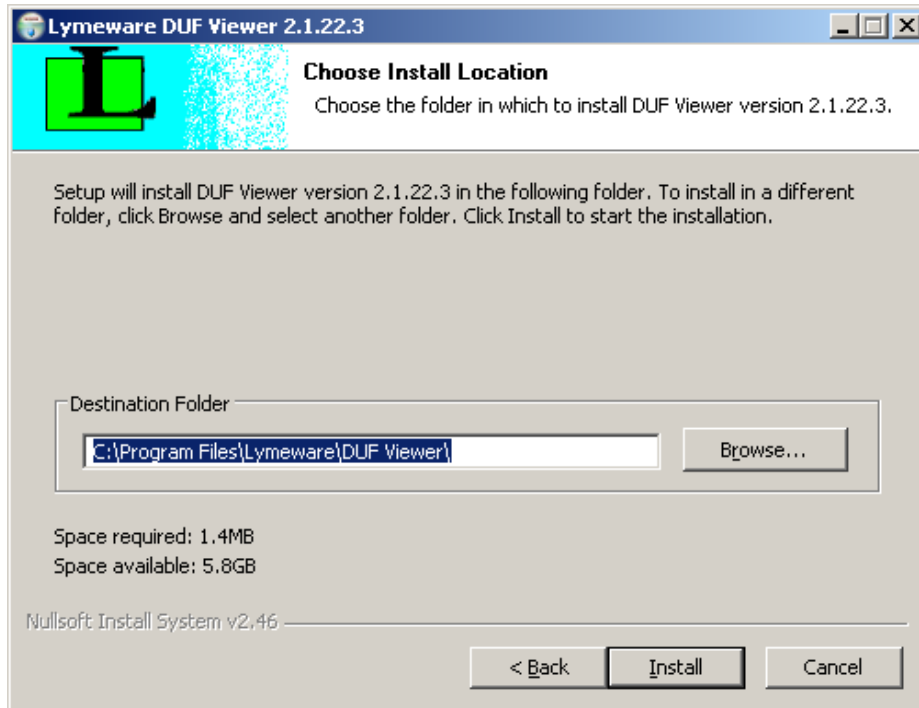


Figure 3. The Install Location window

The default install location may be changed here, but all examples in this manual assume that the default location is used. Press the **Install** button when ready to continue.

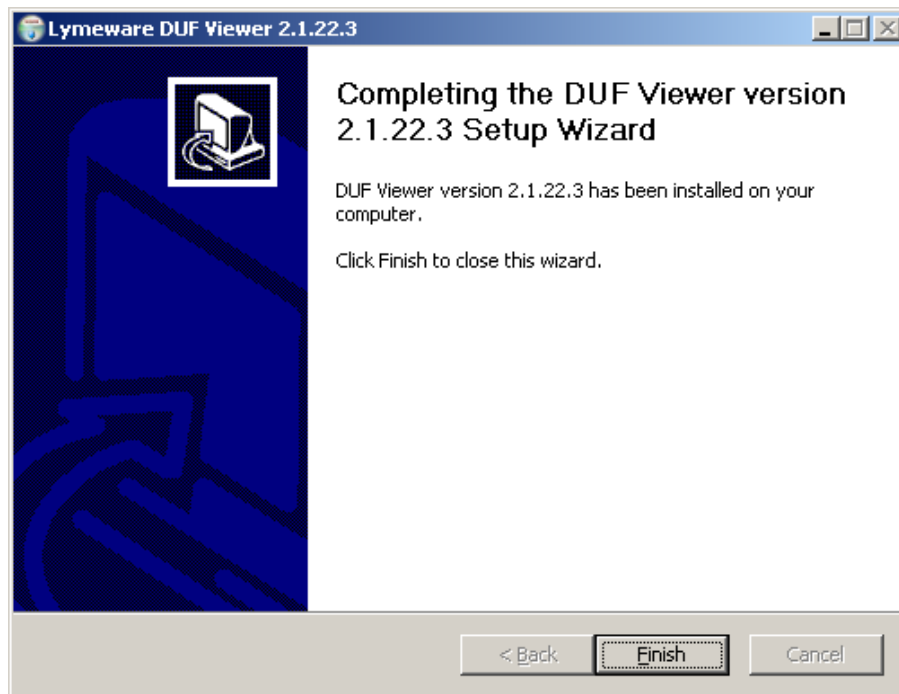


Figure 4. The Final Windows Install window

SECAB Viewer User's Guide

At this point, the SECAB Viewer product has been successfully installed. Click the **Finish** button.

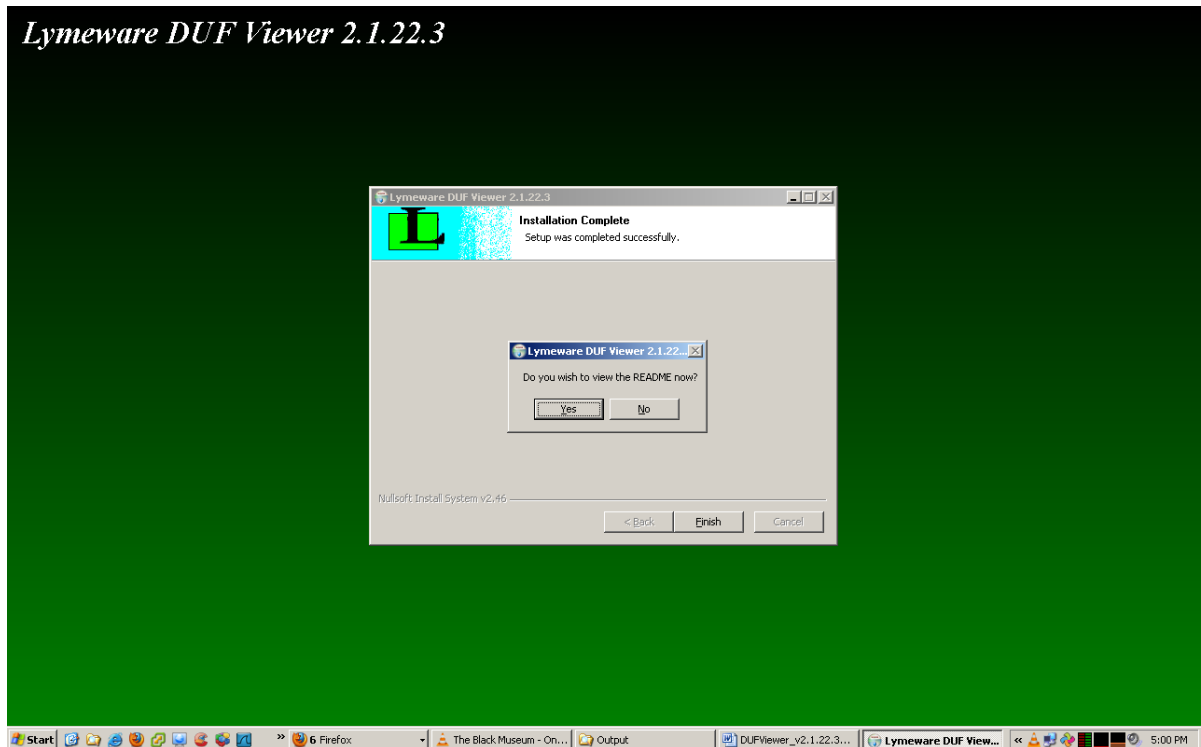


Figure 5. The Install Completion window

Finally, the user is presented with the choice to view the README file on installation exit. If the Yes button is selected then a Notepad window will open up with the SECAB Viewer README text file contents. If the No button is selected then the install will just exit successfully.

Requesting a license key

All new users need to request a license key to operate SECAB Viewer on any platform.

A specific license key file will be required to run the SECAB Viewer program. Lymeware will supply this license file if the following information is supplied via email to Lymeware Sales (see Appendix A for the License Request form):

- Customer/Company Name:
- Product Name: **SECAB Viewer**
- Platform: [either **Linux**, **Solaris**, or **Windows 2000/XP/Vista**]
- Target Machine IP Address:
- Target Machine Host ID: (only needed for Solaris machines)
- Contact Person:

SECAB Viewer User's Guide

- Contact Phone Number:
- Contact E-Mail Address:

A digital license request form is also available for completion and submission to Lymeware. The license file will be delivered to the Contact E-Mail Address. In all cases, regardless of platform, the license key should be renamed to **license.dat** and copied to the same location as the SECAB Viewer binary (**secabviewer** for Linux or Solaris or **secabviewer.exe** for Windows).

A 30-day fully functional evaluation license is available from Lymeware's sales department. Lymeware Sales may be contacted at sales@lymeware.com.

About the SECAB Viewer Product

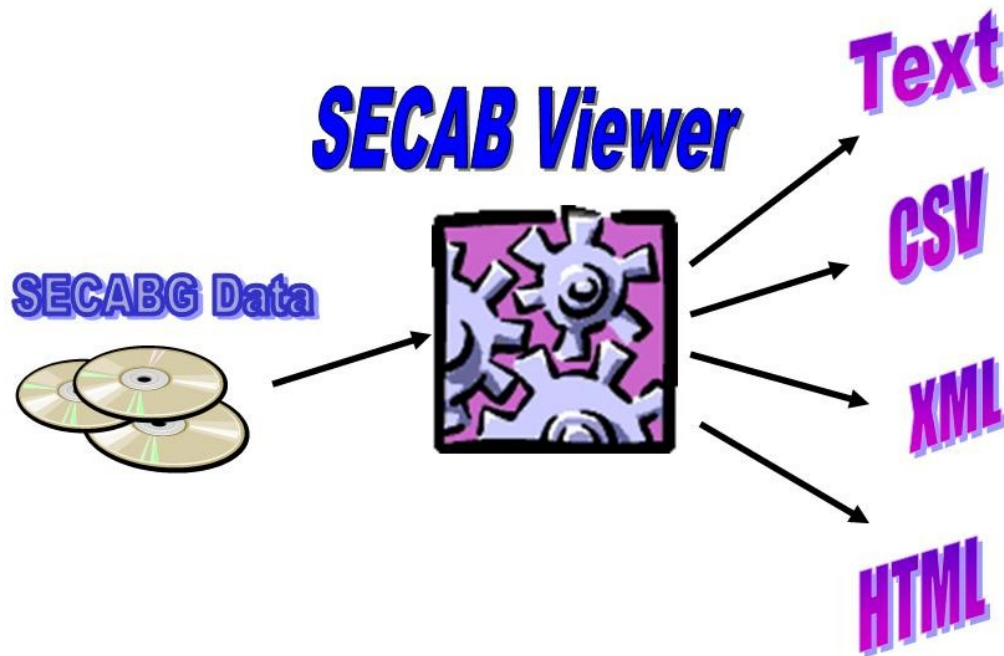


Figure 6. The SECAB Viewer Data Flow Diagram

Functional Description

- Supports SECABG telecom industry standard file formats
- Runs on Windows 2000/XP/Vista, Linux or Solaris
- Generates verbose text (human readable) output format reports
- Generates CSV (comma delimited) output format for use in standard spreadsheet programs or DBMS data import
- Generates valid XML output format reports
- Generates HTML output format reports for use with many popular web browsers
- Designed to handle very large (50 to 500 megabyte) SECABG input files
- Can generate a summary output report for SECABG input file analysis

Navigating the Output Formats

All of the output formats use the same basic layout – making it easy for you to move from one area of the output to the next. Figure 7 shows the common and **optional** elements of all output formats.

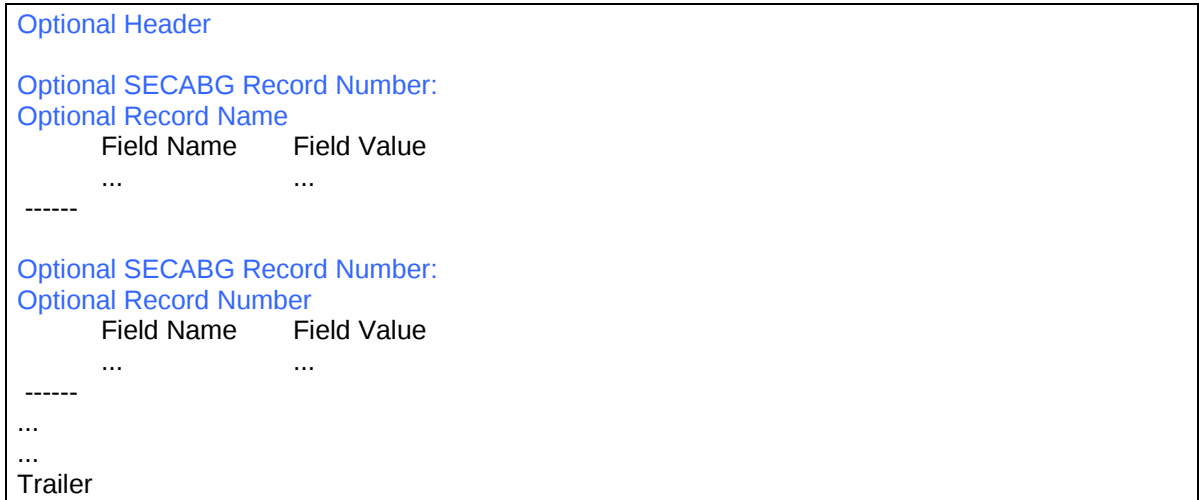


Figure 7. The Generic SECAB Viewer Output Format

Figure 8 shows example SECAB Viewer HTML output with the standard areas listed and described.

SECAB Viewer User's Guide

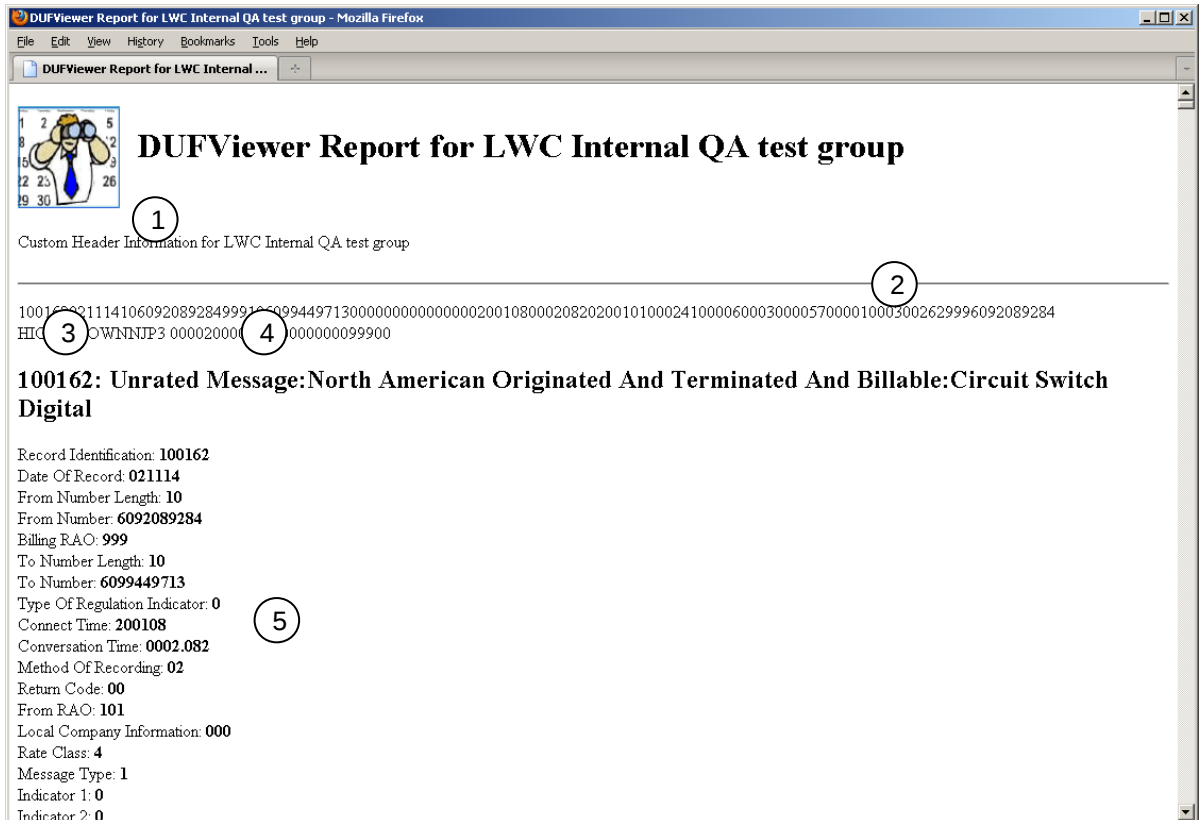


Figure 8. An HTML Output Format Example

Various key elements of the generic output format layout are highlighted on Figure 8, as follows:

1. Optional Header (displayed by default, not displayed with the `-q` or `--noheader`)
2. Optional Raw SECABG Input Record (not displayed by default, display with `-r` or `--raw`)
3. Optional SECABG Record Number (not displayed by default, displayed with `-n` or `--recno`)
4. Optional SECABG Record Name/Description (not displayed by default, display with `-T` or `--types`)
5. Standard SECABG field display, usually in the form of:
<SECABG Field Name>: <space><field value>
6. The standard trailer

Tip

Not every output format will allow all display options to generate valid output. See the **Valid Options** table in each output section for specific command line options, which do support each specific output option.

SECAB Viewer User's Guide

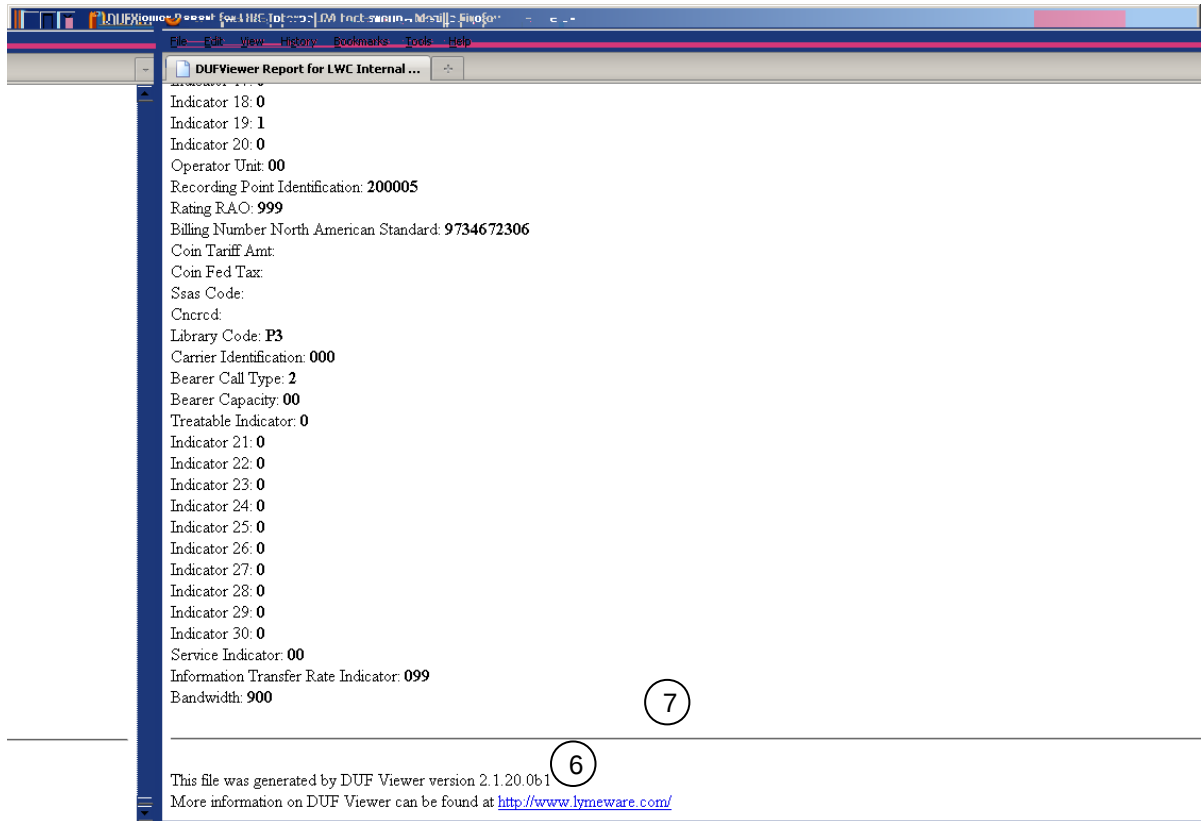


Figure 9. An HTML Output Format Example (continued)

Using SECAB Viewer

SECAB Viewer From A Command Line

SECAB Viewer is run from a command line (or DOS Box/Command Shell or Windows).

The most common form is:

```
secabviewer <secabg_file>
```

The full form is:

```
secabviewer [-b] [--bodyonly] [-c] [--csv] [-d] [--debug] [-D]
[--database] [-n] [--recno] [-N] [--number] [-o FILE] [--output=FILE]
[-q] [--noheader] [-r] [--raw] [-s] [--summary] [-S] [--summarydetail]
[-t] [--text] [-T] [--types] [-u] [--uppercase] [-w] [--html] [-x]
[--xml] [-v] [--version] [-h] [--help] <secabg_file> [ <secabg_file> [ . . . ] ]
```

Command Line Switch Descriptions

The following table describes each of the SECAB Viewer command line switches. Note that in most cases there are multiple ways of specifying the same thing, e.g. `-b` and `--bodyonly` are synonymous.

h

Command line option values, which contain spaces, should be surrounded by double quotes.

Switch	Description
<code>-b</code> <code>--bodyonly</code>	Display only the <BODY> section of HTML output format.
<code>-c</code> <code>--csv</code>	Set output format to CSV (comma-delimited format).
<code>-d</code> <code>--debug</code>	Display debug messages to standard out (screen).
<code>-D</code> <code>--database</code>	Display CSV records in database format.

Table 1. Command Line Options

SECAB Viewer User's Guide

-n --recno	Display SECABG record numbers.
-N --number	Number the displayable field labels.
-o FILE --output=FILE	Send output to FILE.
-r --raw	Display raw SECABG records.
-q --noheader	Do not display output header.
-s --summary	Print an SECABG summary report.
-S --summarydetail	Print an SECABG summary detail report.
-t --text	Set output format to ASCII text (default).
-T --types	Display SECABG Record type descriptors.
-u --uppercase	Force field descriptions to UPPERCASE.
-w --html	Set output format to HTML (webpage).
-x --xml	Set output format to XML.
-v --version	Print the version information.
-h --help	Display the usage message and exit..

Table 2. Command Line Options (continued)

Command Examples

The following examples will be from a Windows platform, but the specific commands and command line options will be identical, regardless of the actual platform, you are using.

At the command shell prompt type:

```
secabviewer test.dat
```

The previous command will use `test.dat` as the input SECABG file. The results will be sent to stdout or the screen. The format will be in text (default), with no raw, no types, no record numbers, and no summary.

```
secabviewer --output=test.txt test.dat
```

The previous command will also use `test.dat` as the input SECABG file. The results will be saved in `test.txt`. The format will be in text (default), with no raw, no types, no record numbers, and no summary.

This next command is the same as the one above except the output format now will be comma-delimited (CSV).

```
secabviewer --csv --output=test.csv test.dat
```

This command is the same as the one above except using short command line options:

```
secabviewer -c -o test.csv test.dat
```

The next command will use `test.dat` as the input SECABG file. The results will again be saved in `test.csv`.

```
secabviewer --csv --output=test.csv test.dat
```

The next command will generate a standard report in the XML format to the output file `test.xml`.

```
secabviewer --xml --output=test.xml test.dat
```

This command is the same as the last one above except using short command line options:

SECAB Viewer User's Guide

```
secabviewer -x -o test.html test.dat
```

The next command will generate a report with record numbers and record descriptions in the HTML format to the output file `test.html`.

```
secabviewer --html -recno -types --output=test.html test.dat
```

This command is the same as the last one above except using short command line options:

```
secabviewer -w -r -T -o test.html test.dat
```

The final example will generate a report with record numbers and record descriptions, but without HTML header or trailer elements, in the HTML format to the output file `test.htm`.

```
secabviewer --html -recno -types -bodyonly --output=test.htm  
test.dat
```

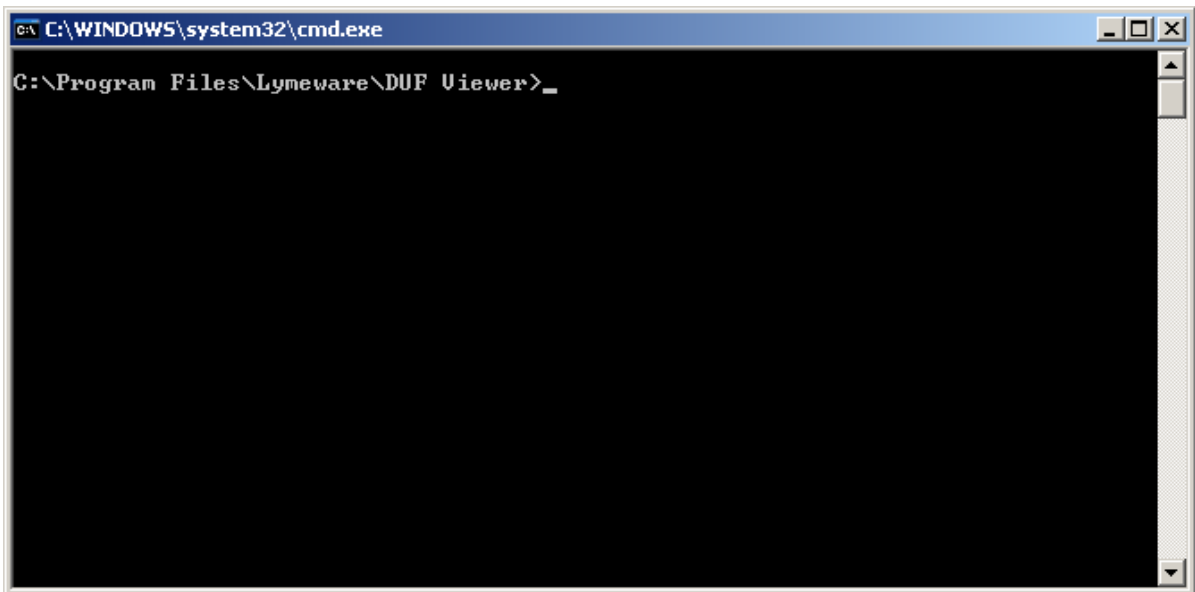


Figure 10. The Command Shell for SECAB Viewer

On a Windows machine select **Start->Programs->Lymeware->SECAB Viewer->shell** to open up a command shell in the SECAB Viewer install directory (see Figure 10).

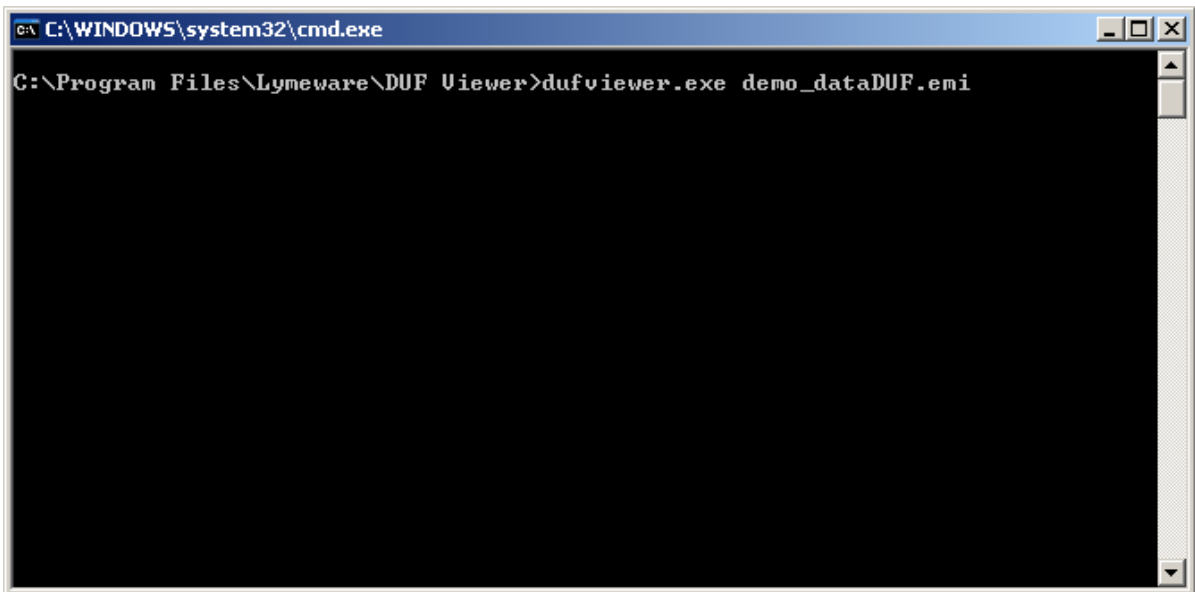
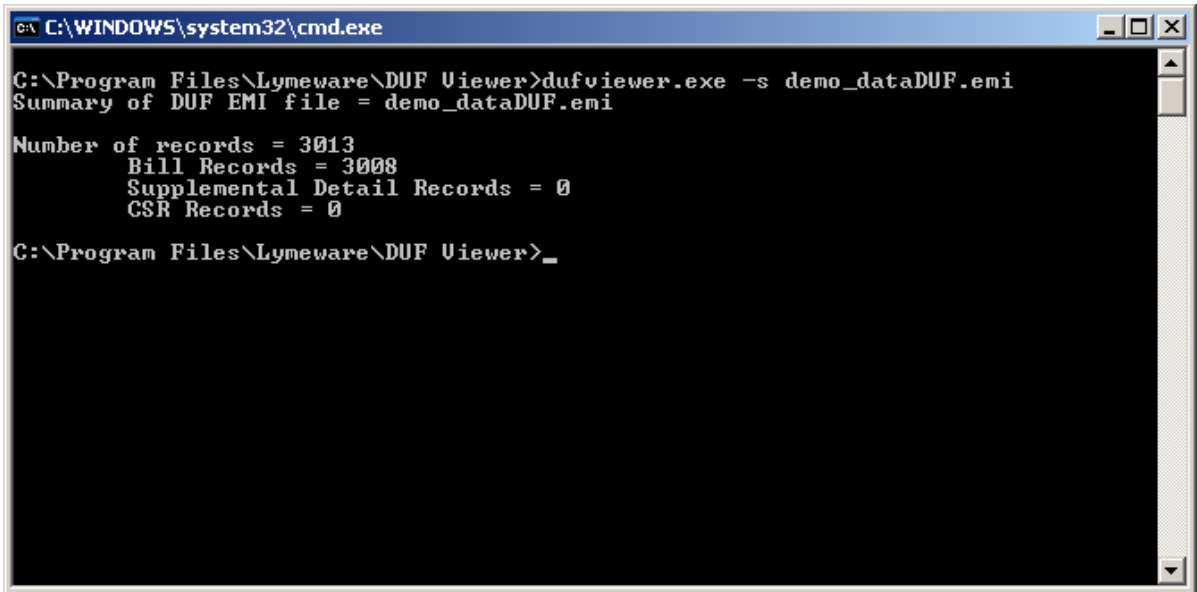


Figure 11. A Simple SECAB Viewer Example

A simple example of running SECAB Viewer on Windows is shown in Figure 11.



```
C:\WINDOWS\system32\cmd.exe
C:\Program Files\Lymeware\DUF Viewer>dufviewer.exe -s demo_dataDUF.emi
Summary of DUF EMI file = demo_dataDUF.emi
Number of records = 3013
    Bill Records = 3008
    Supplemental Detail Records = 0
    CSR Records = 0
C:\Program Files\Lymeware\DUF Viewer>_
```

Figure 12. An Example of the Summary Output

A summary report (generated with a `-s` or `--summary` option) will list the following information for the specific SECABG input file:

- Invoice Number
- SECABG Version

It will also list the total number of SECABG records found in the file and a breakdown by record category.

A summary detail report (generated with a `-S` or `--summarydetail` option) will list all of the above summary report information and a breakdown of the number of records by record number. This report can be very valuable in determining the types and majority of records in use and provided by the SECAB carrier.

Tip

Not all SECABG records may be supported by your version of SECAB Viewer.

Contact Lymeware Sales for custom reports designed to your exact specifications.

Output Formats

SECAB Viewer's core functionality is the ability to:

- Parse SECABG data, and
- Save/Display this data in useful formats

SECAB Viewer contains a huge database of all of the SECABG record formats and field definitions. It also contains standard record and field selection filters, as selected by Lymeware.

Custom output reports can be developed by Lymeware engineering filters in a custom binary or by additional post SECAB Viewer processing.

The basic output formats are:

Text – can be read by any standard text editor or word processor,

CSV – can be imported into and processed by all standard spreadsheet programs,

Database – can be imported into many common database programs,

XML – can be processed by any program that can import XML, including several standard Telecom billing systems, and

HTML – can be displayed by any standard web browser

Lymeware can support other formats or modification of these standard formats as custom work.

The Text Output Format

The text output format is the default SECAB Viewer format and is easily read and understood by most people. The output is simply a list of SECABG record blocks, each which displays all unfiltered fields (as field name / value pairs). The field name / value pairs are tab-delimited. The field names will be as located in the SECABG standard documents. The displayed values will be exactly as presented in your raw SECABG input files. The single exception to this rule is the presentation of numeric data values, which are encoded in the SECABG records. No other SECABG input file data values will be modified by the SECAB Viewer product.

The specific definitions and particular usage of the SECABG field names is explicitly defined in ATIS OBF SECABG Billing Specifications standard documents (as listed in Appendix B).

```

DUF Viewer version 2.1.20.0b1
Licensed to: LWC Internal QA test group SerialNumber: test2009-0033 License Expires on :Thu Jan 6 16:02:53 2011

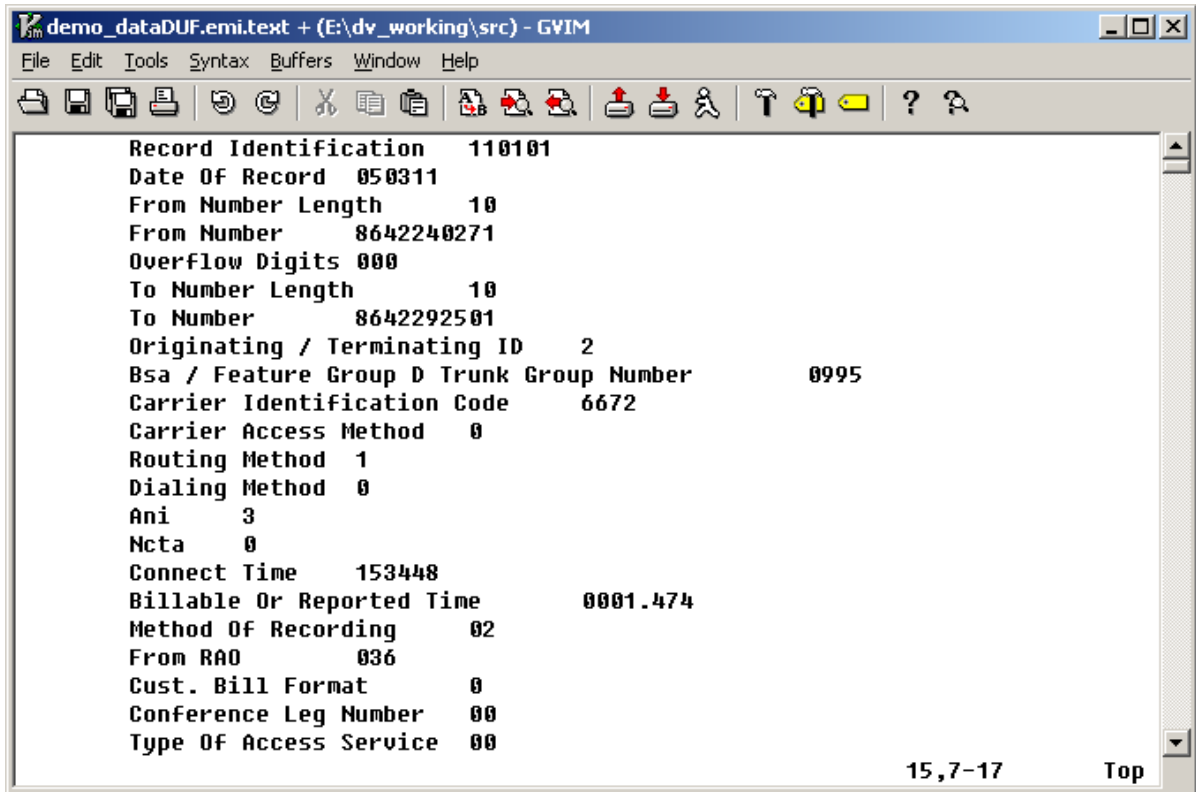
=====
100162:
Unrated Message:North American Originated And Terminated And Billable:Circuit Switch Digital
Record Identification 100162
Date Of Record 021114
From Number Length 10
From Number 6092089284
Billing RAO 999
To Number Length 10
To Number 6099449713
Type Of Regulation Indicator 0
Connect Time 200108
Conversation Time 0002.082
Method Of Recording 02
Return Code 00
From RAO 101
Local Company Information 000
Rate Class 4
Message Type 1
1,29 Top

```

Figure 13: Standard Text Output Format

A standard text output is displayed in Figure 13. This example output file was generated with the `--recno` option (which displayed the “100162” record number) and the `--types` option (which displays the “Unrated Message:North American Originated And Terminated And Billable:Circuit Switch Digital” record name).

SECAB Viewer User's Guide



```
demo_dataDUF.emi.text + (E:\dv_working\src) - GVIM
File Edit Tools Syntax Buffers Window Help
Record Identification 110101
Date Of Record 050311
From Number Length 10
From Number 8642240271
Overflow Digits 000
To Number Length 10
To Number 8642292501
Originating / Terminating ID 2
Bsa / Feature Group D Trunk Group Number 0995
Carrier Identification Code 6672
Carrier Access Method 0
Routing Method 1
Dialing Method 0
Ani 3
Ncta 0
Connect Time 153448
Billable Or Reported Time 0001.474
Method Of Recording 02
From RAO 036
Cust. Bill Format 0
Conference Leg Number 00
Type Of Access Service 00
15,7-17 Top
```

Figure 14: A Record Detail View (Text Format)

A Record Detail View in text format is shown in Figure 14. This file was generated without any command line options. Again, the specific definitions of each of the fields must be determined by the SECABG standards.

SECAB Viewer User's Guide

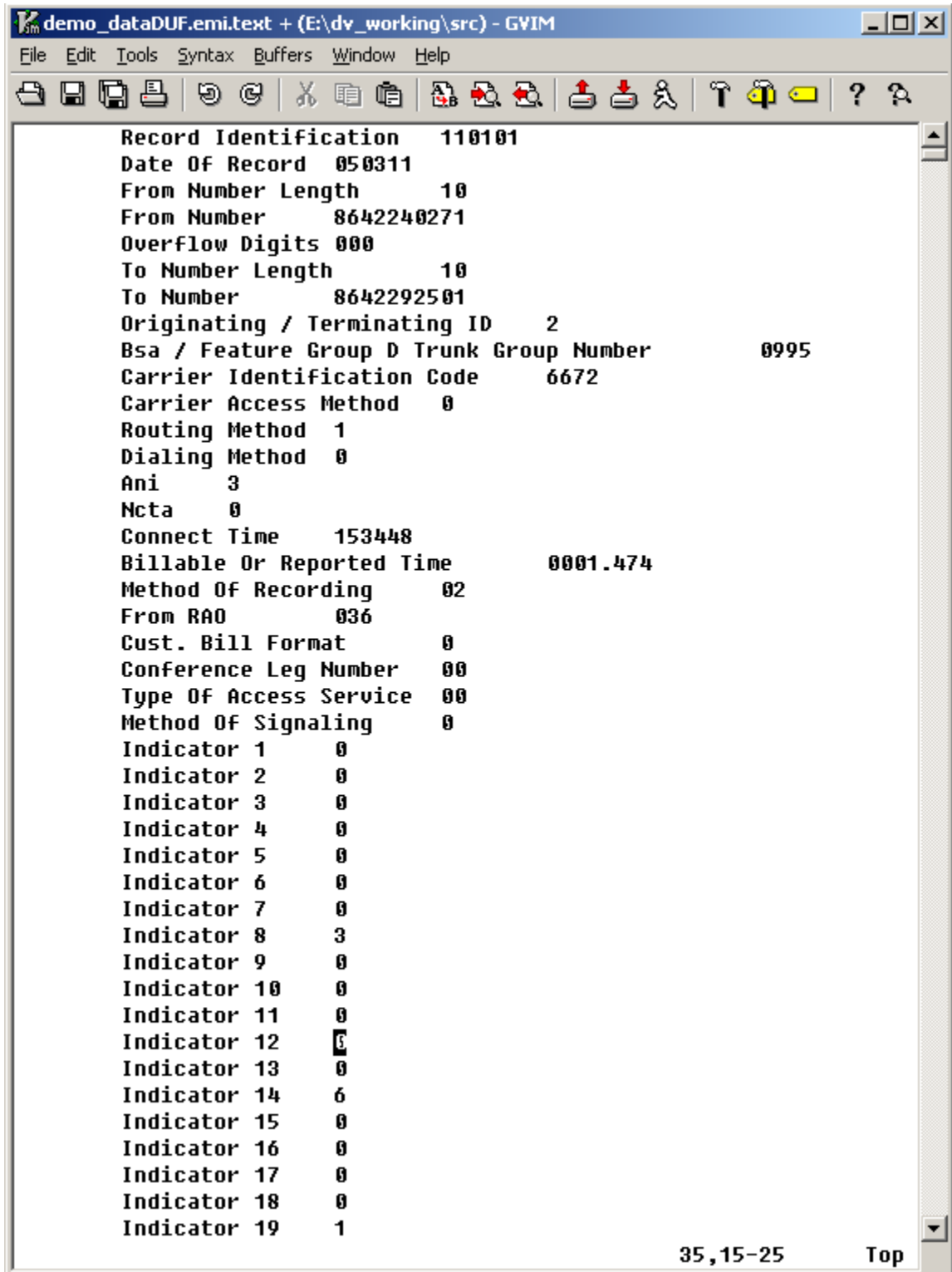


Figure 15: A Message Telephone Service Record (Text Format)

Figures 15 and 16 show a single Message Telephone Service Record in text format. This information is the detailed description of a single customer call. .

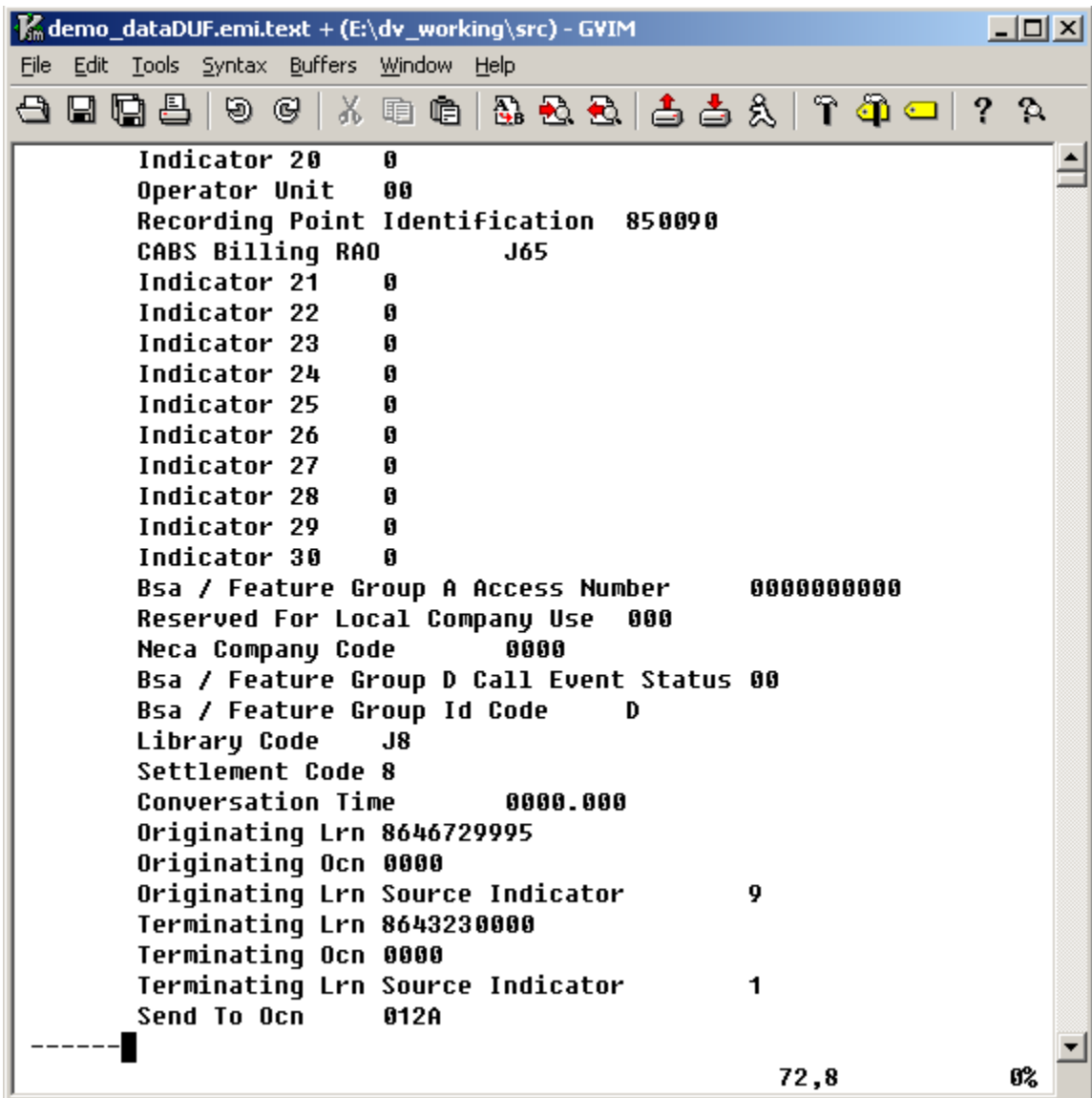


Figure 16: A Message Telephone Service Record (Text Format - continued)

Valid Text output format options

The following options will still generate valid Text output

```

--debug*
--noheader
--number
--output
--raw
--recno
--summary**
--summarydetail**
--text
--types
--uppercase
    
```

SECAB Viewer User's Guide

The following options will not generate valid Text output

--bodyonly	--help
--csv	--html
--database	--version
--debug*	--xml

* Debug will generate valid output only if the --output option is used or stdout is redirected to a file. All debug data is written to stderr.

** A summary report is in text format but will not produce a valid text output format containing any SECABG values.

The CSV (Comma-Delimited) Output Format

Another output format that SECAB Viewer supports is the Comma Separated Values (or CSV) file format.

CSV files can be opened by Microsoft Excel or OpenOffice Calc for viewing or by Notepad, Wordpad, and other text editors – and can easily be parsed as input files by most database software and spreadsheet products.

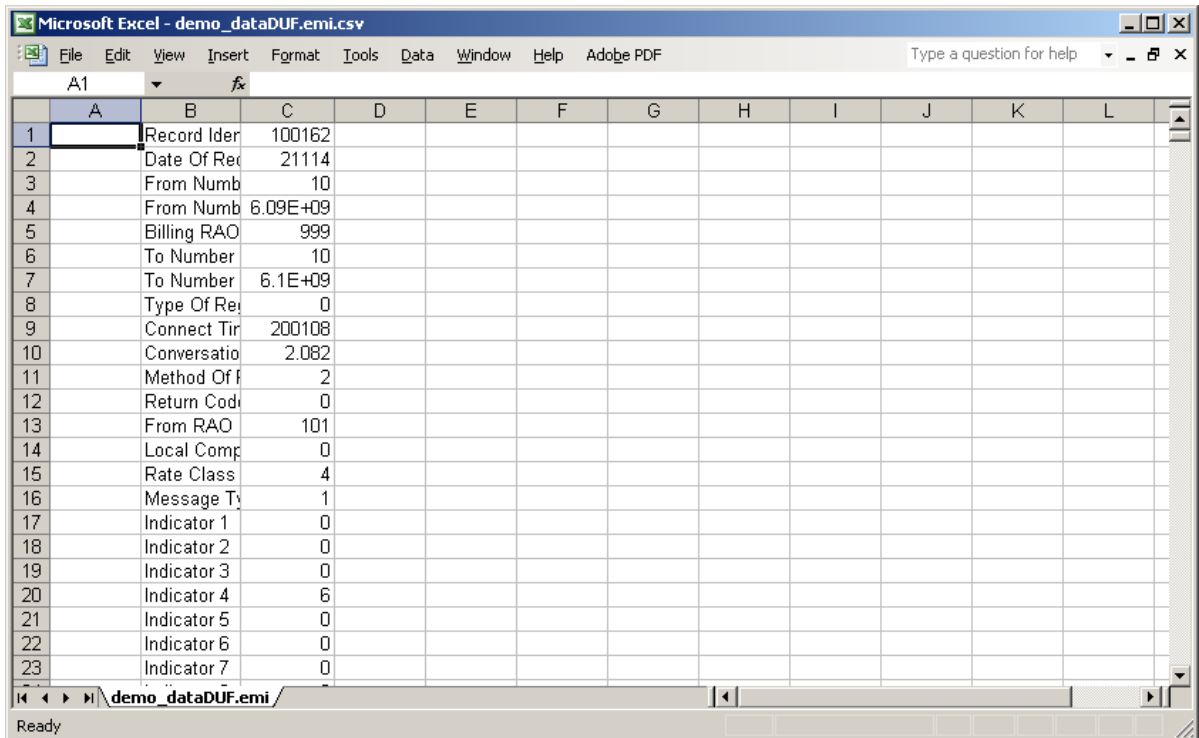


Figure 17: The Initial CSV Output Format

Figure 17 shows the initial view of a CSV output file as displayed by Microsoft Excel.

Basic formatting of column widths

The single downside of CSV as a spreadsheet format is that no formatting data is included within the CSV file. We suggest that the second (B) column and third (C) column be auto-sized to a reasonable width. Be sure to save the spreadsheet as a native spreadsheet format (like .xls for Excel format).

SECAB Viewer User's Guide

	A	B	C	D	E	F	G	H	I
1		Record Identification	100162						
2		Date Of Record	21114						
3		From Number Length	10						
4		From Number	6092089284						
5		Billing RAO	999						
6		To Number Length	10						
7		To Number	6099449713						
8		Type Of Regulation Indicator	0						
9		Connect Time	200108						
10		Conversation Time	2.082						
11		Method Of Recording	2						
12		Return Code	0						
13		From RAO	101						
14		Local Company Information	0						
15		Rate Class	4						
16		Message Type	1						
17		Indicator 1	0						
18		Indicator 2	0						
19		Indicator 3	0						
20		Indicator 4	6						
21		Indicator 5	0						
22		Indicator 6	0						
23		Indicator 7	0						

Figure 18: Detail Record (CSV format after reformat)

Figure 18 is an example of a standard CSV output file, after column B and C widths have been auto-formatted for easier viewing.

The typical format for CSV SECABG record field rows is:

```
<empty> <Field Name> <Field Values>
```

CSV Database Format

A	B	C	D	E	F	G	H	I	J	K	L	
144	Business/	Telephone Numt	TN Custom	Recording Numt	Recording	Recording	Date Call	Date Call	Called From	Called Froi	Called From	
145	4	8762473093	56	8762473093	12	21		8762473093	CHICOPEE	MA	8765922	
146	4	8762473093	56	8762473093	1	6		8762473093	CHICOPEE	MA	8765922	
147	4	8762473093	56	8762473093	1	10		8762473093	CHICOPEE	MA	8765922	
148	4	8762473093	56	8762473093	1	11		8762473093	CHICOPEE	MA	8765922	
149	4	8762473093	56	8762473093	1	10		8762473093	CHICOPEE	MA	8765922	
150	4	8762473093	56	8762473093	1	12		8762473093	CHICOPEE	MA	8765922	
151	Resale Us	Call Plan Quanti	Call Plan C	Resale Service	Business/T	Telephone	TN Custom	TN Custom	TN Customer C	TN Customer C	Usage Que	Local Usage
152	0	3	4	8762473093	56	4	0	20041215	20050114			
153	0	3	4	8762473093	56	0	0	20041215	20050114			
154	0	0	4	8762473093	56	0	0	20041215	20050114			
155	Resale Us	Resale Usage A	Resale Us	Resale Usage A	Business/T	Telephone	TN Custom	Recording	Recording Numt	Recording	Date Call M	
156	4	8762477678	427	8762470180	1	3		8762470180	SPRINGFLD	MA	8762971	
157	4	8762477678	427	8762470180	1	6		8762470180	EASTHAMPTN	MA	8765299	
158	4	8762477678	427	8762470180	1	6		8762470180	EASTHAMPTN	MA	8765279	
159	4	8762477678	427	8762470180	1	14		8762470180	EASTHAMPTN	MA	8765279	
160	4	8762477678	427	8762470180	1	14		8762470180	EASTHAMPTN	MA	8765279	

Figure 19: Resale Call Detail Usage Records (in CSV Database Format)

If the CSV output is used as import to a database, a special format (as displayed in Figure 19) should be used. This special format (selected by the `or` options) collapses the record number into the CSV row for each field displayed, and directly supports import to many major databases (including Microsoft Access, Microsoft SQL-Server, Oracle, MySQL, Informix, Sybase, DB2, and several others).

Currently the `-database` format builds a single CSV file, but a perl script is supplied which will spilt the single database file into multiple CSV files, one file for each record type, each with a single header record (with field names), and all other records in the format:

Record Number,	Index Record Number,	<remaining CSV data>
----------------	----------------------	----------------------

Table 3. Standard Database Record Format

The Perl script is provided as a wrapper script, which calls the SECAB Viewer binary internally. It is used with the following options:

```

database_split [-hedvx] [-b <binary path>]
SECABG_file [SECABG_file [...]]

database_split-1.0.2

Process a SECABG input file and generates a split database
output format in multiple files, specifically for database
import use.
Display Options:
    
```

SECAB Viewer User's Guide

```
-h Help -- just display this message and quit.
-d Do display all debug messages to STDERR.
-e Display all invalid log entries on STDERR.
-v Verbose display (to STDERR) of each entry
processed.
-x Display all requests of nonexistent files to
STDERR.
Input Options:
  -b <binary path> Force the use of <binary path> for
    SECAB Viewer binary location.
  ... Process the sequence of SECABG files.
```

Valid CSV output format options

The following options will still generate valid CSV output

--csv	--output
--database	--recno
--debug*	--types
--noheader	--uppercase
--number	

The following options will not generate valid CSV output

--bodyonly	--summarydetail
--debug*	--text
--help	--version
--html	--xml
--raw	
--summary	

* Debug will generate valid output only if the --output option is used or stdout is redirected to a file. All debug data is written to stderr.

The XML Output Format

Extensible Markup Language (XML) is a simple, very flexible text format derived from SGML ([ISO 8879](#)). Originally designed to meet the challenges of large-scale electronic publishing, XML is also playing an increasingly important role in the exchange of a wide variety of data on the Web and elsewhere.

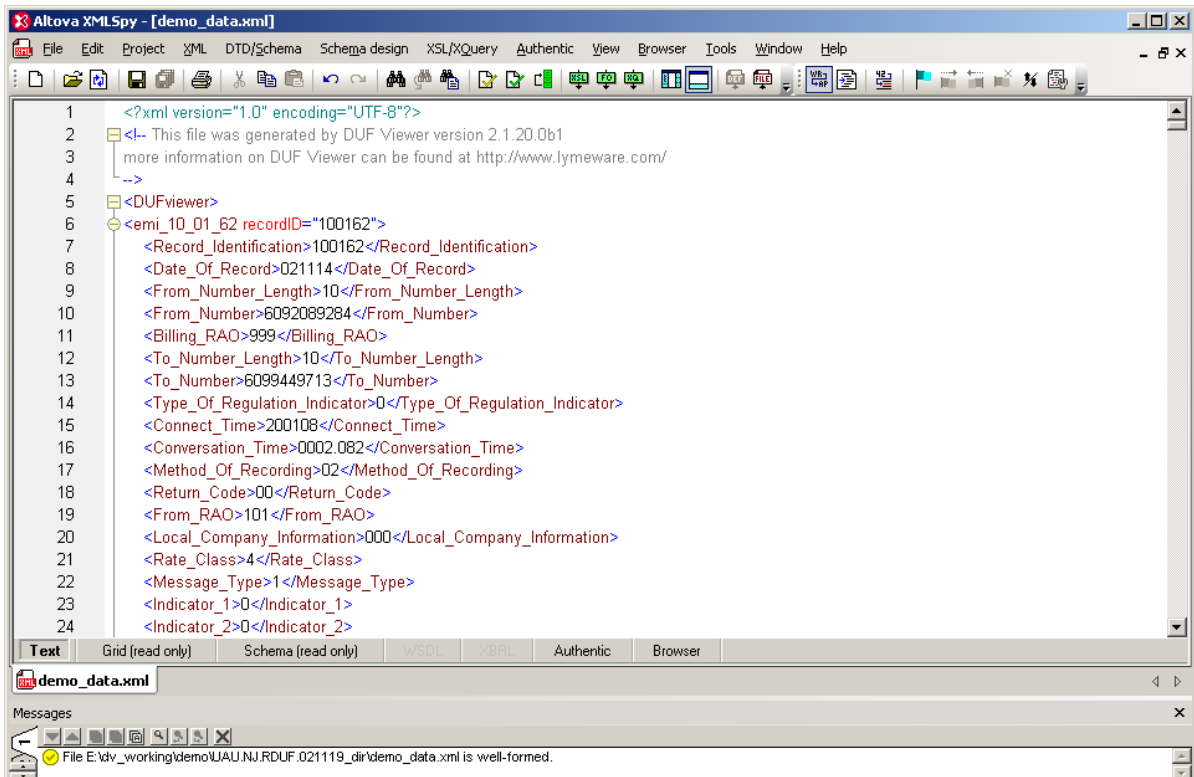


Figure 20: A “Well-Formed” Detail Record (XML Format)

Figure 20 shows a SECAB Viewer XML output format file (as displayed by XMLSpy). Note the yellow check mark and the message “This file is well-formed.” Well-formed XML is correctly formatted as per the XML standards.

SECAB Viewer User's Guide

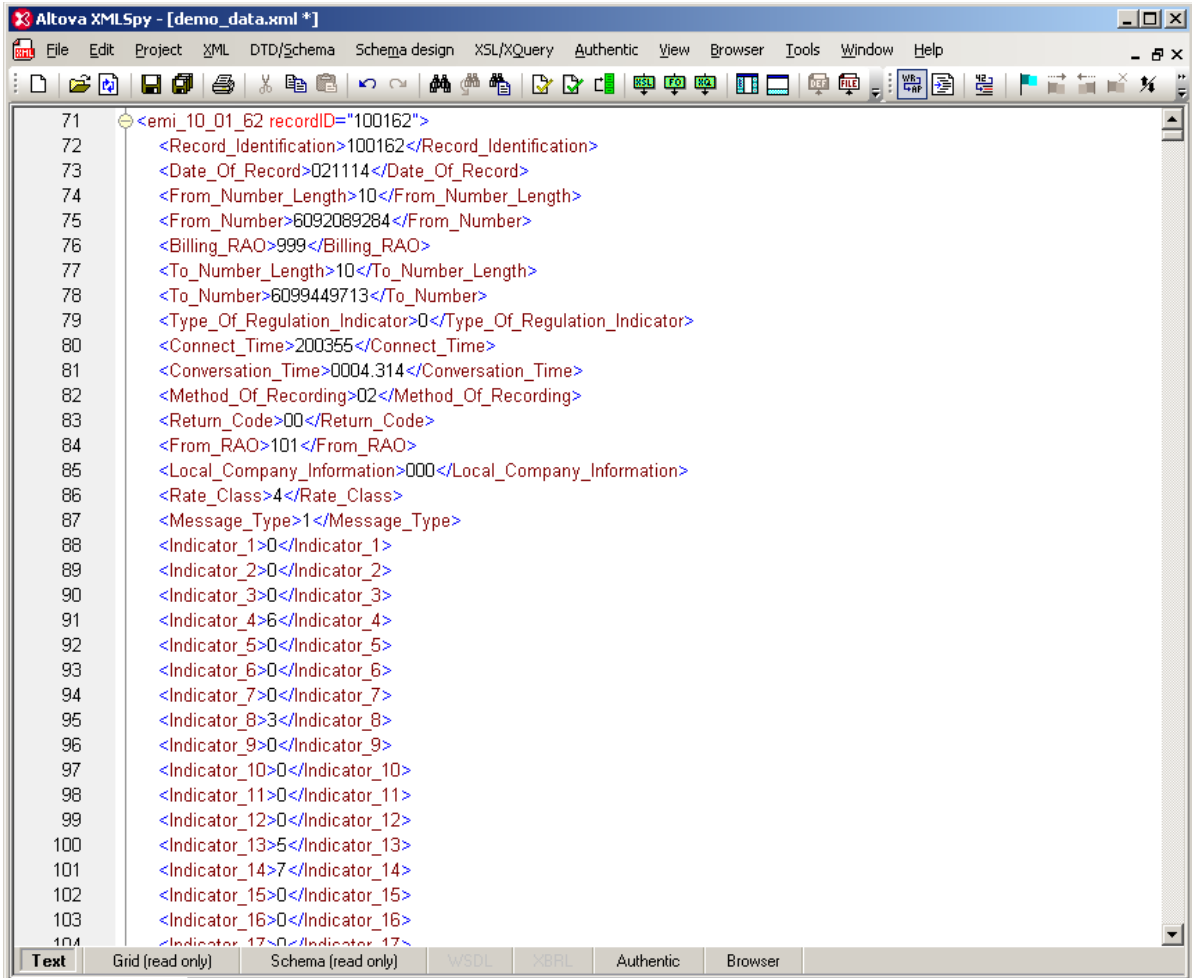


Figure 21: Detail Record (XML Format)

A Detail record in XML format is shown in Figures 21 and 22. This file was generated without any command line options.

SECAB Viewer User's Guide

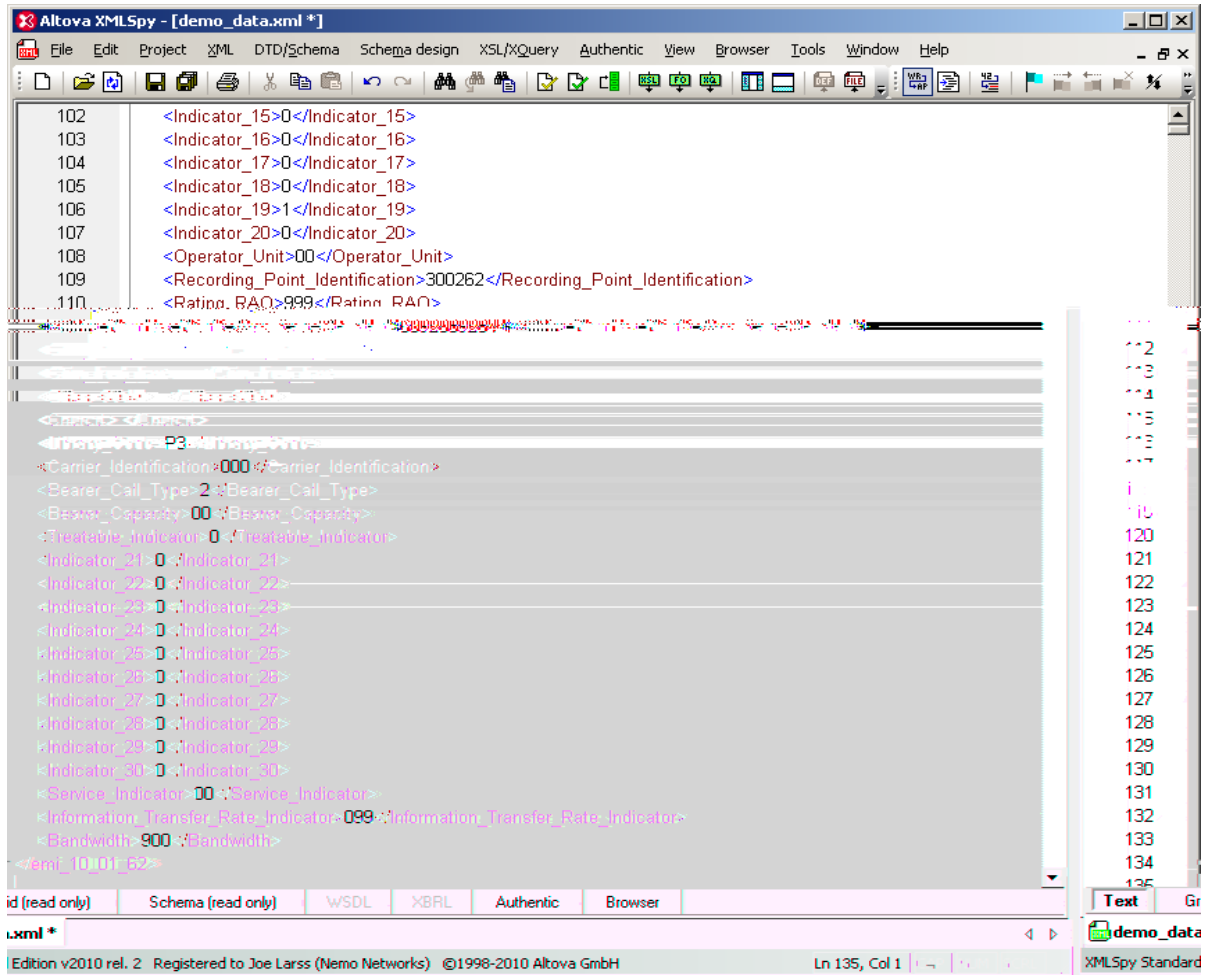


Figure 22: Detail Record (XML Format - continued)

XML Field Name to Tag Name Translations

SECAB Viewer generates XML tag names on the fly from the SECABG record field descriptions. Due to the nature of XML formatting, specific characters are not valid as tag name components. These translations are documented below:

Field Description Character	Tag Name Character
(space)	_ (underscore)
\ (back slash)	_ (underscore)
/ (forward slash)	_ (underscore)
< (less than)	_ (underscore)
> (greater than)	_ (underscore)
& (and sign)	_ (underscore)

Table 4. XML Tag Name Translations

Therefore the field description of "AM & PM Ind" is translated to "AM__PM_Ind".

Valid XML output format options

The following options will still generate valid XML output

--debug*	--uppercase
--noheader	--xml
--number	
--output	

The following options will not generate valid XML output

--bodyonly	--recno
--csv	--summary
--database	--summarydetail
--debug*	--text
--help	--types
--html	--version
--raw	

* Debug will generate valid output only if the --output option is used or stdout is redirected to a file. All debug data is written to stderr.

The HTML Output Format

The final output format SECAB Viewer supports is HyperText Markup Language (HTML) version 4, the publishing language of the World Wide Web. In addition to the text, multimedia, and hyperlink features of the previous versions of HTML (HTML 3.2 [\[HTML32\]](#) and HTML 2.0 [\[RFC1866\]](#)), HTML 4 supports more multimedia options, scripting languages, style sheets, better printing facilities, and documents that are more accessible to users with disabilities. HTML 4 also takes great strides towards the internationalization of documents, with the goal of making the Web truly World Wide.

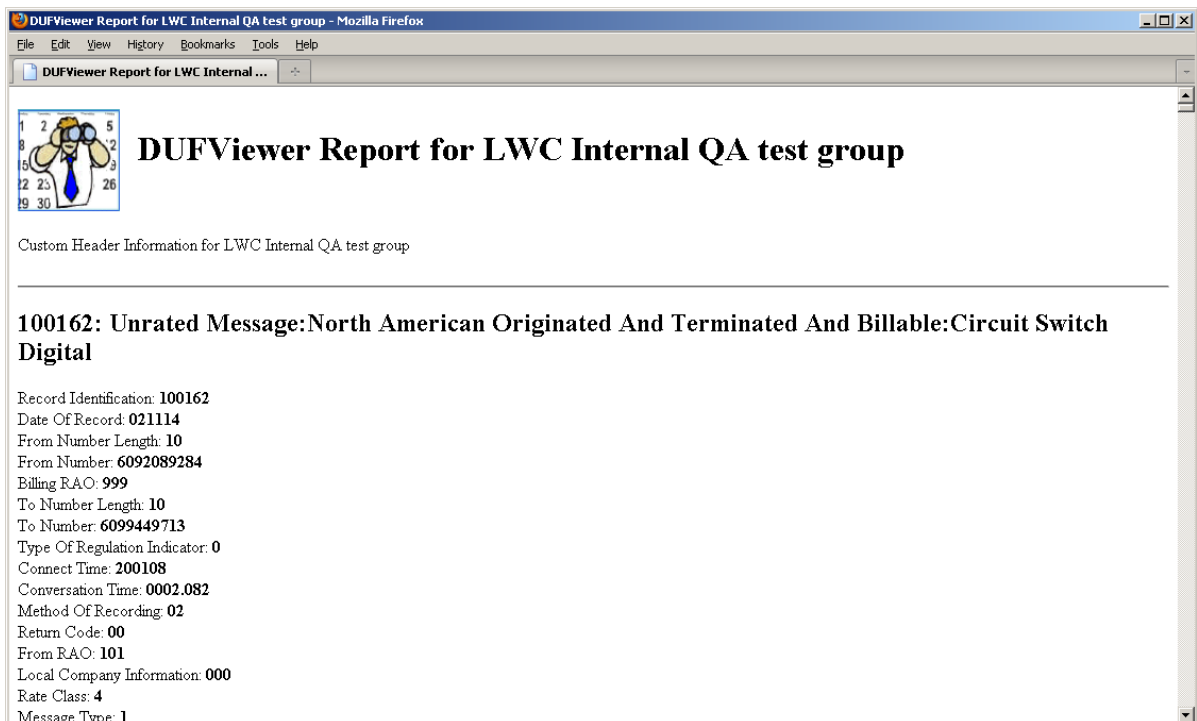


Figure 23: Example of HTML Output

Figure 23 is a standard example of SECAB Viewer HTML output format. In this example the output file was generated with the `--recno` option (which displayed the “100162” record number) and the `--types` option (which displays the “Unrated Message: North American Originated And Terminated And Billable: Circuit Switch Digital” record name).

SECAB Viewer User's Guide

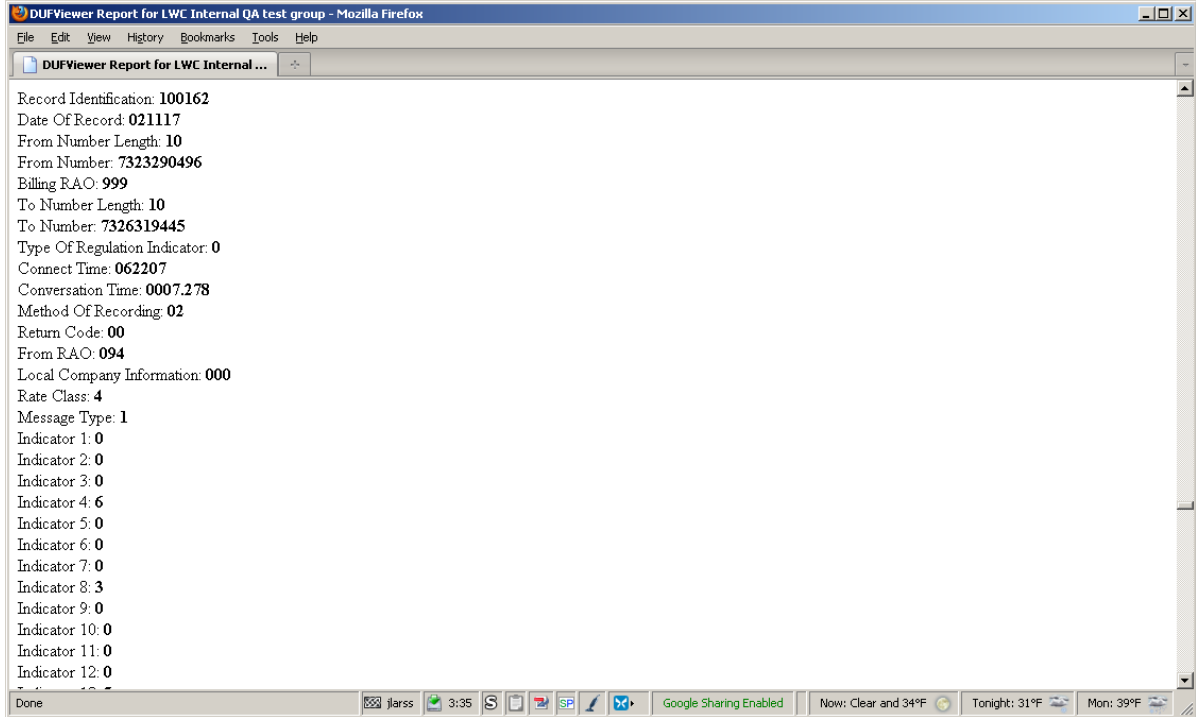


Figure 24: A Circuit Switch Digital Message Record (HTML Format)

A Circuit Switch Digital Message record in HTML format is shown in Figure 24. This file was generated without any command line options.

The --bodyonly Option

You may want to customize the HTML output data to a standard corporate template or display format. To facilitate this, the `-b` or `--bodyonly` option is provided. Typical html pages have the following format:

```
<html>
<head>
  <title> title </title>
  header tags and data
</head>
<body>
  SECAB Viewer header
  body tags and data
  SECAB Viewer trailer
</body>
</html>
```

Table 5. HTML Standard Format Outline

But with the `--bodyonly` option only the following HTML code will be generated:

SECAB Viewer header body tags and data SECAB Viewer trailer

Table 6. HTML Body-Only Format Outline

To allow the page to be correctly rendered, a HTML header and a HTML trailer portion will need to be provided.

Data, similar to this example, should be provided for the HTML header:

<pre><!DOCTYPE html PUBLIC "-//W3C//DTD HTML 4.01 Transitional//EN" "http://www.w3.org/TR/html4/loose.dtd"><html><head><title>SECABViewer Report for LWC Internal QA test group</title></head><body></pre>
--

In addition, data, similar to this example, should be provided for the HTML trailer:

<pre></BODY></HTML></pre>

Valid HTML output format options

The following options will still generate valid HTML output

--bodyonly**	--raw
--debug*	--recno
--html	--types
--noheader	--uppercase
--number	
--output	

The following options will not generate valid HTML output

--csv	--summarydetail
--database	--text
--debug*	--version
--help	--xml
--summary	

* Debug will generate valid output only if the --output option is used or stdout is redirected to a file. All debug data is written to stderr.

** The --bodyonly option will generate valid HTML that will only comprise a portion of a valid page of HTML.

SECAB Viewer Utilities

Utilities Overview

Although SECAB Viewer can generate several output formats, some customers require additional functionality either to support their current processing stream or to generate specific required reports. Most processing stream requirements can be supported with wrapper scripts. A wrapper script is a (usually perl) script, which can do pre or post stream or data processing and directly call SECAB Viewer from inside the script. Examples of two such processing stream scripts are illustrated below.

Lymeware has two methods of generating additional or custom reports:

- Wrapper scripts, or
- Customizing SECAB Viewer directly

Wrapper scripts for custom reports

Lymeware (or any other Perl or script expert) can take the raw SECAB Viewer output (in any of the selected output formats) and modify/filter/process the data and generate specialized reports. An example of such a script is below.

Customizing SECAB Viewer internal filters

Lymeware can also take your custom report requirements and generate a custom SECAB Viewer binary, with your requirements coded in to the internal filters. So, for example, if you only wanted to display **Circuit Switch Digital Message (100162)** Records and only the TN fields (and field values), this can be done. These specific records and fields can be un-filtered (and every other record and field can be filtered out) to create the report as needed.

Do contact Lymeware Sales if you have custom report needs. We can help.

Batch Processor

The SECAB Viewer system can process a list of files but cannot rename all the output files to unique and recognizable (and match-able to the original input filenames) output filenames.

This simple SECAB Viewer wrapper script allows a single directory, as the only required argument.

```
perl processBatch.pl [options] <directory>
```

This script will take any input SECABG file (e.g. secab.dat), process it and save the output in a file called secab.dat.out.

```
    processBatch [-hdv] [-b <binary path>] [-e
<extension>]
  [-t <output format>] [-a <command line arguments>]
  <SECABG_directory>

processBatch-1.0.1

Process a single directory containing SECABG input files
(with default extension of .dat) and run SECAB Viewer (with
args) on each.

Display Options:
  -h  Help -- just display this message and quit.
  -d  Do display all debug messages to STDERR.
  -v  Verbose display (to STDERR) of each entry
processed.
Input Options:
  -b <binary path> Force the use of <binary path> for
SECAB Viewer binary location.
  -e <extension> Treat any files with this extension as
an input file (default is .dat).
  -t <output format> can be one of the following:
text, csv, xml, html or database
  -a <command line arguments> to pass to SECAB Viewer
for each file processed.

  <SECABG_directory> full path to directory of SECABG
files.
```

Process an Entire Directory of Files

The SECAB Viewer system can repeatedly process the contents of a single directory with the following utility. The only single requirement is that every SECABG data file must have `.dat` as an extension. The resulting output files will have either `.dat.out`, `.csv`, `.xml` or `.html` as extensions to the same base filename.

SECAB Viewer User's Guide

This simple SECAB Viewer wrapper script allows a single directory, as the only required argument.

```
perl processDirectory.pl [options] <directory>
```

This script will poll the directory every 5 minutes for any new files. Any processed files will be renamed with a extension (so they will not be reprocessed on the next poll).

```
processDirectory [-hdv] [-b <binary path>] [-e  
<extension>] [-t <output format>] [-a <command line  
arguments>] <SECABG_directory>
```

```
processDirectory-1.0.1
```

Process a single directory containing SECABG input files (with default extension of .dat) and run SECAB Viewer (with args) on each, polling every 5 minutes.

Display Options:

- h Help -- just display this message and quit.
- d Do display all debug messages to STDERR.
- v Verbose display (to STDERR) of each entry

processed.

Input Options:

- b <binary path> Force the use of <binary path> for SECAB Viewer binary location.
- e <extension> Treat any files with this extension to an input file (default is .dat).
- t <output format> can be one of the following:
text, csv, xml, html or database
- a <command line arguments> to pass to SECAB Viewer for each file processed.

<SECABG_directory> full path to directory of SECABG files.

A Custom Report

Lymeware can supply custom output report filters and formatters to produce specific required reports, including:

- FID/USOC reports,
- Detailed Usage reports,
- End User reports,
- And many others

How to Get Help

This chapter explains how to contact Lymeware Product Support if you need assistance with your SECAB Viewer product.

Scope of Support Services

Lymeware Product Support can provide assistance and information for the following:

- Installing the SECAB Viewer product
- SECAB Viewer product questions
- Software revisions and upgrades
- Implementing a specific feature
- How to use the SECAB Viewer product
- The status of your support call
- Requests for product enhancement

Unfortunately, we cannot assist you with problems involving the following, but we may be able to suggest a next step or another vendor to call:

- Your hardware
- Your operating system or other system software
- Your application or user-written programs
- Software not developed by Lymeware Corporation
- Scripts written by Lymeware consultants, partners, or other third parties

Try this first

Before you call Lymeware Product Support, use your software manuals (including this manual) to locate the section that documents the program or feature where you are having problems. The documentation may explain the software's behaviour or give you insight to help you solve the problem.

Contact Lymeware Product Support

Two e-mail addresses are available for SECAB Viewer product support or to report a potential bug in the software or documentation. Please use the following addresses:

Support@lymeware.com for all technical inquires and problem reports, including documentation issues from customers with support contracts. Customers should include relevant contact details, including company name and phone number, in initial message to speed processing. Messages that are continuations of an existing problem report should include the problem report ID in the subject line. Customers without support contracts with Lymeware Corporation should not use this address, but should contact their distributor directly.

Bugs@lymeware.com for bug reports and documentation problems.

Bug reports on software releases are always welcome. These may be sent by any means, but e-mail to the bug reporting address listed above is preferred. Please send proposed fixes and successful workarounds with the report if possible. Additional useful information would include **SECAB Viewer** software version, hardware description, operating system version and patches, screen dumps, relevant sections of logs and configuration files, and failed messages files. Any reports will be acknowledged, but further action is not guaranteed. Any changes resulting from bug reports may be included in future releases.

Appendix A - CONFIGURATION WORKSHEETS AND FORMS

This appendix contains worksheets that should be used to complete specific tasks during the installation, configuration and maintenance of your SECAB Viewer product. The following table describes each worksheet.

License Request Form	This form is required for issuing of an evaluation or permanent license (required for product operation)
Problem Reporting Form	This form should be used for any problems encountered which can be reported back to Lymeware

Table 7. SECAB Viewer Product Worksheets

These worksheets may be copied for use in maintaining your SECAB Viewer product.

License Request Form

A specific license data file will be required to run your SECAB Viewer product. Lymeware or your distributor will be able to supply a valid license file if the following information is supplied:

<h1 style="margin: 0;">SECAB Viewer License Request Form</h1> <p style="margin: 0; text-align: right;">Version 1.3</p>	
For requesting a valid commercial or evaluation SECAB Viewer product license	
Customer specific information	
Customer (Company) Name:	
Lymeware Product Name:	SECAB Viewer
Lymeware Product Version:	
Lymeware Product Options:	standard
Target Machine IP Address:	
Target Machine Host ID (only needed for Solaris):	
Target Machine Make and Model:	
Target Machine Operating System and Version:	
Contact Person:	
Contact Phone Number:	
Contact E-mail Address:	
This License Request Form may be faxed to Lymeware Corporation at (240) 218-7363 or the same information may be e-mailed to sales@lymeware.com .	

Copyright ©2001-2010 Lymeware Corporation, All rights reserved
 Permission to copy for use in SECAB Viewer product installation is granted

The license file will be delivered to the Contact E-Mail Address. The license file must be installed in the SECAB Viewer install directory as `license.dat` and must be owned by root.

SECAB Viewer Problem Report Form

Version 1.1

For reporting SECAB Viewer product problems

Customer specific information

Your Name:

Your Company Name:

Your Telephone Number:

Your E-mail Address:

Your SECAB Viewer product version:

Your SECAB Viewer platform:

Any software add-ons to your SECAB Viewer system:

A detailed description of the problem:

The sequence of steps that led to the problem:

Actions you have taken to diagnose or resolve the problem:

This Problem Report Form may be faxed to Lymeware Corporation at (240) 218-7363 or the same information may be e-mailed to sales@lymeware.com.

Copyright ©2003-2010 Lymeware Corporation, All rights reserved
 Permission to copy for use in SECAB Viewer product installation is granted

Appendix B – SECAB VIEWER REFERENCE DOCUMENTATION

ATIS/OBF	Small Exchange Carrier Access Billing (SECAB) Guideline Issue 12, September 2006
ATIS/OBF	OBF DOCUMENTS http://www.atis.org/obf/download.asp
VIM	Vim User's Guide, http://vimdoc.sourceforge.net/
Microsoft	Excel User's Guide, http://www.microsoft.com/
Sun Microsystems	StarOffice Manuals, http://docs.sun.com/app/docs/coll/so7en
OpenOffice.org	OpenOffice User's Guides, http://download.openoffice.org/index.html
ThinkFree Office	ThinkFree Office User's Guides, http://www.thinkfree.com/
Altova	XMLSpy User's Guide, http://www.altova.com/
Microsoft	Internet Explorer 6.0 User's Guide, http://www.microsoft.com/
Mozilla.org	Mozilla User's Guide, http://www.mozilla.org/
Mozilla.org	Firefox User's Guide, http://www.mozilla.org/
Perl	Perl Documentation, http://www.perl.org/docs.html
ActiveState	ActivePerl Documentation, http://aspn.activestate.com/ASPN/Reference/
Red Hat	RPM User's Guide, http://www.redhat.com/docs/manuals/enterprise/

Table 8. Commercial or third party documentation used by this product or manual

Standards Identification	Standards Body	Standards Title and Publication Date
CSV	De facto	http://www.creativyst.com/Doc/Articles/CSV/CSV01.htm
XML	W3C	Extensible Markup Language (XML) 1.1 W3C Recommendation 04 February 2004 http://www.w3.org/TR/2004/REC-xml11-20040204/
HTML 3.2	W3C	HTML 3.2 Reference Specification W3C Recommendation 14-Jan-1997 http://www.w3.org/TR/REC-html32
HTML 4.0.1	W3C	HTML 4.01 Specification W3C Recommendation 24 December 1999 http://www.w3.org/TR/html401

Table 9. National, International, Internet, and Industry Standards used by this product

Appendix D – INSTALLING PERL

The Perl scripting language is required for the included SECAB Viewer utilities (as described in the *SECAB Viewer Utilities* chapter), and different installation instructions are required depending on the host platform. A minimum Perl version of **5.6.x** is recommended for correct use.

Linux Perl Installation

Many of the Linux distributions (including Red Hat Enterprise Linux) have Perl preinstalled and will not need any special installation to use the included Perl scripts.

To test for this, type the following in a bash shell console:

```
perl -v
```

If Perl is correctly installed, a message similar to the following shall be returned:

```
This is perl, v5.8.6 built for linux-thread-multi-64int

Copyright 1987-2004, Larry Wall

Perl may be copied only under the terms of either the Artistic License or the GNU General Public License, which may be found in the Perl 5 source kit.

Complete documentation for Perl, including FAQ lists, should be found on this system using `man perl' or `perldoc perl'. If you have access to the Internet, point your browser at http://www.perl.org/, the Perl Home Page.
```

If Perl is not found using the above command, it may need to be installed. Our Linux reference platform (Red Hat Enterprise Linux 5) uses RPM (the Red Hat Package Manager) for product installation and management.

Your specific Linux distribution may use other package managers. If not using Red Hat Linux and RPM then refer to your own distribution's package installation instructions.

If installing from Red Hat, perform the following tasks:

- Log in as root
- In a bash shell, run yum:

```
yum install perl
```

This will install the latest version of Perl on your system.

Solaris Perl Installation

The newest versions of Solaris have Perl preinstalled and will not need any special installation to use the included Perl scripts.

To test for this, type the following in a shell window:

```
perl -v
```

If Perl is correctly installed, a message similar to the following shall be returned:

```
This is perl, v5.8.6 built for solaris-thread-multi-64int

Copyright 1987-2004, Larry Wall

Perl may be copied only under the terms of either the Artistic License or the GNU General Public License, which may be found in the Perl 5 source kit.

Complete documentation for Perl, including FAQ lists, should be found on this system using `man perl' or `perldoc perl'. If you have access to the Internet, point your browser at http://www.perl.org/, the Perl Home Page.
```

If Perl is not found using the above command, it may need to be installed. Solaris uses the PKG (Package) utilities for product installation and management.

Lymeware uses the www.sunfreeware.org web site for Solaris pre-packaged open source products. Surf to the site, select your specific platform and Solaris version and download the binary package to your local Solaris machine.

Once downloaded, perform the following tasks:

- Log in as root
- In a ksh shell, run pkgadd with the following command:

```
pkgadd -d. <perl_pkg_name>
```

This will install the latest version of Perl on your system.

Windows Perl Installation

Lymeware recommends ActivePerl (from [ActiveState www.activestate.com/](http://www.activestate.com/)) for Perl on all Windows platforms.

Perform the following tasks:

Go to <http://activestate.com/Products/ActivePerl/> and select one of the three links at the bottom of the page. Eventually you will get to a page of download links and select a Windows MSI file (in the form of ActivePerl-5.N.N.NNN-MSWin32-x86-122208.msi).

Next, install the MSI file (using Microsoft Windows Installer 2.0+, available on the ActiveState website or the Microsoft website).

During the install do select **Enable PPM3 to send profile info to ASPN**, as this will allow you to easily update Perl CPAN packages and modules from within ActivePerl.

Appendix E - GLOSSARY

ANSI - American National Standards Institute.

ATIS - Alliance for Telecommunications Industry Solutions.

CLEC – Competitive Local Exchange Carrier.

CSV – Comma Separated Values (also called command-delimited format) usually supported by spreadsheet programs and as import formats for many databases.

SECAB – Small Exchange Carrier Access Billing Guideline, a telecom carrier billing standard, supported by many of the major national and regional carriers.

HTML – The Hyper Text Mark-up Language. The data format used to build and describe web pages.

ILEC – Incumbent Local Exchange Carrier.

International Standards Organization (ISO) - creates international standards, including cryptography standards.

Internet Engineering Task Force (IETF) – creates Internet standards, including security and network standards.

ITU-T - International Telecommunications Union - Telecommunications standardization sector.

OBF – Order and Billing Forum of ATIS

OSS – Operational Support System. In the Telecommunications Industry the OSS is the sum of all in-house provisioning and billing systems and databases.

RBOC – Regional Bell (system) Operating Company. The pieces of AT&T created to provide Local telephone service. Often referred to as the “Baby Bells”.

URL – Universal Resource Locator, typically a web browser address or location value.

XML – A open data format, defined by WC3 to allow data interchange between differing programs and platforms.



SECAB Viewer User Guide

Please send suggestions or corrections to:

support@lymeware.com
Lymeware Corporation
Box 1027
Old Lyme, CT 06371 USA
www.lymeware.com